

SPORT-TEK

Sport-Tek® Tricot Track Jacket. JST90



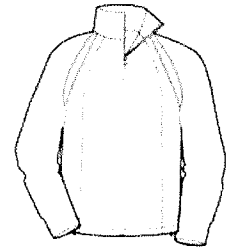
With an active team, you need track gear that can keep up. Made from comfortable tricot, the relaxed styling of our coordinating jackets and pants allow ample room for easy movement, while the athletic-inspired styling ensures your logo stands out.

- 100% polyester tricot
- Tag-free label
- Soft-brushed backing
- Flatlock stitching throughout
- Cadet collar
- Reverse coil zipper
- Raglan sleeves
- Side zippered pockets
- Open hem with drawcord and toggles

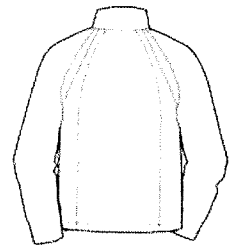
**Please note: This product is transitioning from woven labels to tag-free labels. Your order may contain a combination of both labels*

CARE INSTRUCTIONS

Machine wash cold. Gentle cycle with like colors. Use mild detergent, remove immediately. Do not allow to lay on itself when wet. Do not bleach. Tumble dry low. Cool iron, if needed.

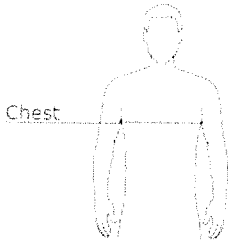


front



back

HOW TO MEASURE



CHEST WIDTH

Measure under the arm and around the fullest part of the chest with arms down, keeping tape horizontal.

SIZE CHART

	XS	S	M	L	XL	2XL	3XL	4XL
Chest	32-34	35-37	38-40	41-43	44-46	47-49	50-53	54-57

COLOR INFORMATION



Black/ Black
PMS NTR BLACK C



True Navy/ White
PMS 533C



True Red/ White
PMS 200C



True Royal/ White
PMS 7687C

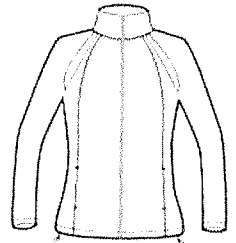
SPORT-TEK

Sport-Tek® Ladies Tricot Track Jacket. LST90

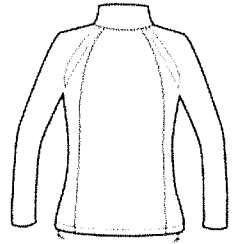


With an active team, you need track gear that can keep up. Made from comfortable tricot, the relaxed styling of our coordinating jackets and pants allow ample room for easy movement, while the athletic-inspired styling ensures your logo stands out.

- 100% polyester tricot
- Tag-free label
- Soft-brushed backing
- Flatlock stitching throughout
- Gently contoured silhouette
- Cadet collar
- Reverse coil zipper
- Raglan sleeves
- Side zippered pockets
- Open hem with drawcord and toggles



front



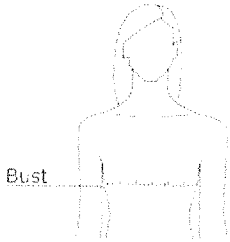
back

**Please note: This product is transitioning from woven labels to tag-free labels. Your order may contain a combination of both labels*

CARE INSTRUCTIONS

Machine wash cold, gentle cycle with like colors. Use mild detergent, remove immediately. Do not allow to lay on itself when wet. Do not bleach. Tumble dry low. Cool iron, if needed.

HOW TO MEASURE



BUST

Measure under the arm and around the fullest part of the bust with arms down, keeping tape horizontal.

SIZE CHART

	S	M	XS	XXL	3XL	4XL	L	XL
Size	4/6	8/10	2	20/22	24/26	28/30	12/14	16/18
Bust	35-36	37-38	32-34	45-47	48-51	52-55	39-41	42-44

COLOR INFORMATION



Black/ Black
PMS NTR BLACK C



True Navy/ White
PMS 533C



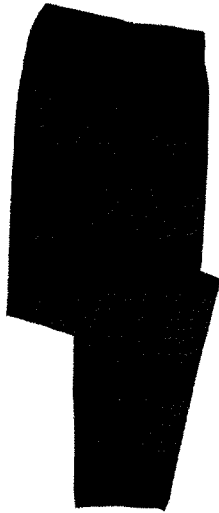
True Red/ White
PMS 200C



True Royal/ White
PMS 7687C

SPORT-TEK

Sport-Tek® Tricot Track Jogger. PST95



Designed for movement, these classic tricot track joggers have a tapered fit and easy on/off zippers.

- 100% polyester tricot
- Soft-brushed backing
- Tag-free label
- Elastic waistband with drawcord
- Side seam pockets
- Reverse coil extended leg zippers

CARE INSTRUCTIONS

Machine wash cold. Gentle cycle with like colors. Use mild detergent, remove immediately. Do not allow to lay on itself when wet. Do not bleach. Tumble dry low. Cool iron, if needed.

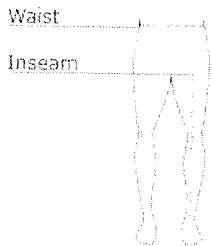


front



back

HOW TO MEASURE



WAIST

Measure around the smallest part of the natural waist.

INSEAM

Measure a similar style pant that fits well and is the desired length. Measure from the crotch seam to the hem.

SIZE CHART

	XS	S	M	L	XL	2XL	3XL	4XL
Waist	26-28	29-31	32-34	35-37	38-40	41-43	44-47	48-51

COLOR INFORMATION



Black
PMS NTR BLACK C



Graphite
PMS NO MATCH



True Navy
PMS 533C



Sport-Tek[®] Tricot Track Jogger. PST95

PRODUCT MEASUREMENTS

	XS	S	M	L	XL	2XL	3XL	4XL
Inseam	29 1/2	29 1/2	30	30 1/2	31	31 1/2	32	32
Waist	12	13 1/2	15	16 1/2	18	19 1/2	21	22 1/2

INSEAM

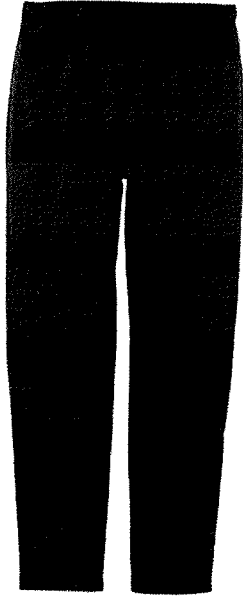
Measured from crotch seam to hem.

WAIST

Measured point to point across the waistband when laid flat.

SPORT-TEK

Sport-Tek® Ladies Tricot Track Jogger. LPST95



Designed for movement, these classic tricot track joggers have a tapered fit and easy on/off zippers.

- 100% polyester tricot
- Soft-brushed backing
- Tag-free label
- Elastic waistband with drawcord
- Flattering back seaming
- Side seam pockets
- Reverse coil extended leg zippers

CARE INSTRUCTIONS

Machine wash cold. Gentle cycle with like colors. Use mild detergent, remove immediately. Do not allow to lay on itself when wet. Do not bleach. Tumble dry low. Cool iron, if needed.

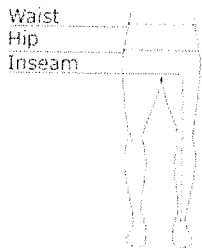


front



back

HOW TO MEASURE



WAIST

Measure around the smallest part of the natural waist.

HIPS

With feet together, measure around the fullest part of hips, keep tape horizontal.

INSEAM

Measure a similar style pant that fits well and is the desired length. Measure from the crotch seam to the hem.

SIZE CHART

	XS	S	M	L	XL	XXL	3XL	4XL
Size	2	4/6	8/10	12/14	16/18	20/22	24/26	28/30
Waist	24-26	27-28	29-30	31-33	34-36	37-39	40-43	44-47
Hip	34-36	37-38	39-40	41-43	44-46	47-49	50-53	54-57

COLOR INFORMATION



Black
PMS NTR BLACK C



Graphite
PMS NO MATCH



True Navy
PMS 533C



Sport-Tek[®] Ladies Tricot Track Jogger. LPST95

PRODUCT MEASUREMENTS

	XS	S	M	L	XL	XXL	3XL	4XL
Inseam	28	28 1/2	29	29 1/2	30	30 1/2	30 1/2	30 1/2
Waist	14	15	16	17 1/2	19	20 1/2	22 1/2	24 1/2

INSEAM

Measured from crotch seam to hem.

WAIST

Measured point to point across the waistband when laid flat.