

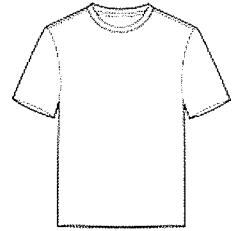


Heavy Cotton™ 100% Cotton T-Shirt. 5000

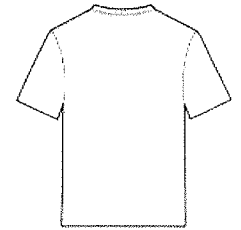


- 5.3-ounce, 100% cotton
- 99/1 cotton/poly (Ash)
- 90/10 cotton/poly (Sport Grey, Antique Cherry Red, Antique Irish Green, Antique Jade Dome, Antique Orange, Antique Sapphire)
- 50/50 cotton/poly (Blackberry, Dark Heather, Heather Military Green, Heather Navy, Heather Red, Heathered Sapphire, Lilac, Midnight, Neon Blue, Neon Green, Russet, Sunset, Tweed, Safety Green, Safety Orange, Safety Pink, Graphite Heather)
- Non-topstitched, classic width, rib collar
- Taped neck and shoulders
- Tearaway label

Due to the nature of 50/50 cotton/poly neon fabrics, special care must be taken throughout the printing process.

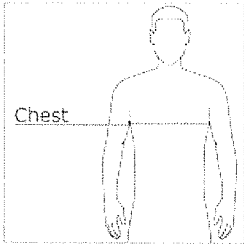


front



back

HOW TO MEASURE



CHEST WIDTH

Measure under the arm and around the fullest part of the chest with arms down, keeping tape horizontal.

SIZE CHART

	S	M	L	XL	2XL	3XL	4XL	5XL
Chest	34-36	38-40	42-44	46-48	50-52	54-56	58-60	62-64

COLOR INFORMATION



Heavy Cotton™ 100% Cotton T-Shirt. 5000

PRODUCT MEASUREMENTS

	S	M	L	XL	2XL	3XL
Chest Width	18	20	22	24	26	28
Body Length at Back	28	29	30	31	32	33
Sleeve Length from Center Back	15.625	17	18.5	20	21.5	22.88

CHEST WIDTH

Measured across the chest one inch below armhole when laid flat.

BODY LENGTH AT BACK

Measured from high point shoulder to finished hem at back.

SLEEVE LENGTH FROM CENTER BACK

Measure from Center Back neck to shoulder point to sleeve hem.



Youth Heavy Cotton™ 100% Cotton T-Shirt. 5000B

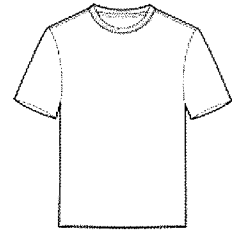


- 5.3-ounce, 100% cotton
- 99/1 cotton/poly (Ash)
- 90/10 cotton/poly (Sport Grey)
- 50/50 cotton/poly (Safety Green, Safety Orange, Graphite Heather, Safety Pink, Dark Heather)
- Non-topstitched, classic width, rib collar
- Taped neck and shoulders
- Tearaway label

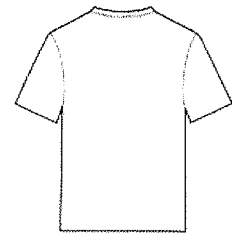
Due to the nature of 50/50 cotton/poly neon fabrics, special care must be taken throughout the printing process.

CARE INSTRUCTIONS

Machine wash warm, inside out, with like colors. Only non-chlorine bleach. Tumble dry medium. Do not iron if decorated. Do not dry clean.



front



back

SIZE CHART

	XS	S	M	L	XL
Size	4	6/8	10/12	14/16	18/20

COLOR INFORMATION



Youth Heavy Cotton™ 100% Cotton T-Shirt. 5000B

PRODUCT MEASUREMENTS

	XS	S	M	L	XL
Chest Width	16	17	18	19	20
Body Length at Back	20 1/2	22	23 1/2	25	26 1/2
Sleeve Length from Center Back	13 1/2	14 1/2	15 1/2	16 1/2	17 1/2

CHEST WIDTH

Measured across the chest one inch below armhole when laid flat.

BODY LENGTH AT BACK

Measured from high point shoulder to finished hem at back.

SLEEVE LENGTH FROM CENTER BACK

Measure from Center Back neck to shoulder point to sleeve hem.

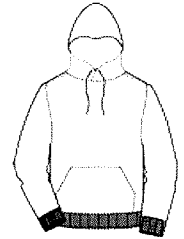


Heavy Blend™ Hooded Sweatshirt. 18500

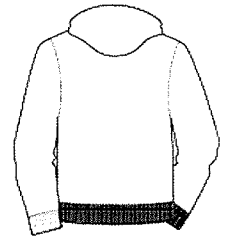


- 8-ounce, 50/50 cotton/poly
- Double-needle stitching at waistband and cuffs
- Double-lined hood with dyed-to-match drawcord
- 1x1 rib knit cuffs and waistband with spandex
- Front pouch pocket

Due to the nature of 50/50 cotton/poly neon fabrics, special care must be taken throughout the printing process.

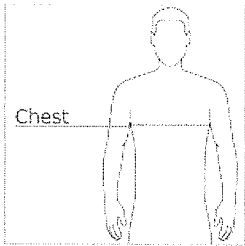


front



back

HOW TO MEASURE



CHEST WIDTH

Measure under the arm and around the fullest part of the chest with arms down, keeping tape horizontal.

SIZE CHART

	S	M	L	XL	2XL	3XL	4XL	5XL
Chest	34-36	38-40	42-44	46-48	50-52	54-56	58-60	62-64

COLOR INFORMATION



Heavy Blend™ Hooded Sweatshirt. 18500

PRODUCT MEASUREMENTS

	S	M	L	XL	2XL	3XL	4XL	5XL
Chest Width	20	22	24	26	28	30	32	34
Sleeve Length	33	34	35	36	37	38	39	40
Body Length at Back	27	28	29	30	31	32	33	34

CHEST WIDTH

Measured across the chest one inch below armhole when laid flat.

SLEEVE LENGTH

Start at center of neck and measure down shoulder, down sleeve to hem.

BODY LENGTH AT BACK

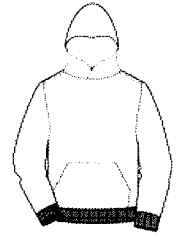
Measured from high point shoulder to finished hem at back.

GILDAN®

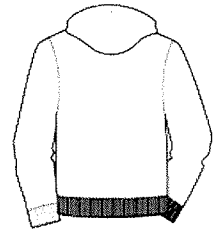
Youth Heavy Blend™ Hooded Sweatshirt. 18500B



- 8-ounce, 50/50 cotton/poly
- Double-needle stitching at waistband and cuffs
- Double-lined hood
- No drawcord at hood
- 1x1 rib knit cuffs and waistband with spandex
- Front pouch pocket



front


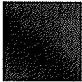



















back

SIZE CHART

	XS	S	M	L	XL
Size	6/8	10/12	14/16	18/20	22/24

COLOR INFORMATION

 Black PMS 426C	 Cardinal Red PMS 1955C	 Carolina Blue PMS 659C	 Charcoal PMS COOL GRAY 10C	 Dark Heather PMS 7545C	 Forest Green PMS 5535C	 Gold PMS 1235C	 Graphite Heather PMS 424C	 Heliconia PMS 213C	 Irish Green PMS 2252C	 Light Pink PMS 684C
 Maroon PMS 7644C	 Navy PMS 533C	 Orange PMS 2026C	 Purple PMS 2112C	 Red PMS 199C	 Royal PMS 7686C	 Sport Grey PMS COOL GRAY 7C	 White			

*Not all sizes are available in every color.



Youth Heavy Blend™ Hooded Sweatshirt. 18500B

PRODUCT MEASUREMENTS

	XS	S	M	L	XL
Size	6/8	10/12	14/16	18/20	22/24
Chest Width	16	17	18	19	20
Sleeve Length from Center Back	23 1/2	26 1/2	27 3/4	30 1/4	33
Body Length at Back	19 3/4	21 1/4	22 1/2	24	25 1/2

CHEST WIDTH

Measured across the chest one inch below armhole when laid flat.

SLEEVE LENGTH FROM CENTER BACK

Measure from Center Back neck to shoulder point to sleeve hem.

BODY LENGTH AT BACK

Measured from high point shoulder to finished hem at back.

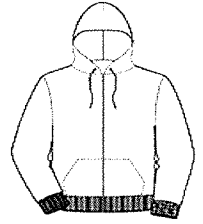
GILDAN®

Heavy Blend™ Full-Zip Hooded Sweatshirt. 18600

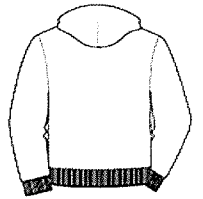


- 8-ounce, US 50/50 cotton/poly
- Double-needle stitching at waistband and cuffs
- Unlined hood with dyed-to-match drawcord
- YKK metal zipper
- 1x1 rib knit cuffs and waistband with spandex
- Front pouch pockets

Due to the nature of 50/50 cotton/poly neon fabrics, special care must be taken throughout the printing process.

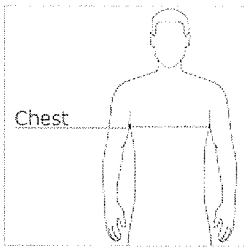


front



back

HOW TO MEASURE







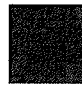













CHEST WIDTH

Measure under the arm and around the fullest part of the chest with arms down, keeping tape horizontal.

SIZE CHART

	S	M	L	XL	2XL	3XL	4XL	5XL
Chest	34-36	38-40	42-44	46-48	50-52	54-56	58-80	62-64

COLOR INFORMATION

										
Ash Grey PMS COOL GRAY 3C	Black PMS 426C	Cardinal PMS 1955C	Carolina Blue PMS 659C	Dark Chocolate PMS 412C	Dark Heather Grey PMS 446C	Forest Green PMS 5535C	Graphite Heather PMS 424C	Irish Green PMS 2252C	Maroon PMS 7644C	Navy PMS 533C
										
Purple PMS 2112C	Red PMS 199C	Royal PMS 7686C	S. Orange PMS ORANGE 021C	Safety Green PMS 382C	Sport Grey PMS COOL GREY 7C	White				

*Not all sizes are available in every color.



Heavy Blend™ Full-Zip Hooded Sweatshirt. 18600

PRODUCT MEASUREMENTS

	S	M	L	XL	2XL	3XL	4XL	5XL
Chest Width	19 1/4	21 1/4	23 1/4	25 1/4	27 1/4	29 1/4	31 3/4	33 1/2
Sleeve Length	33	34	35	36	37	38	39	40
Body Length at Back	26	27	28	29	30	31	32	33

CHEST WIDTH

Measured across the chest one inch below armhole when laid flat.

SLEEVE LENGTH

Start at center of neck and measure down shoulder, down sleeve to hem.

BODY LENGTH AT BACK

Measured from high point shoulder to finished hem at back.

PORT AUTHORITY

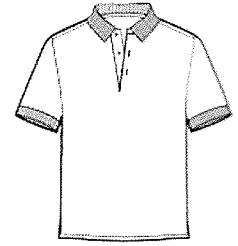
Port Authority® Silk Touch™ Polo K500/K500ES

An enduring favorite, our comfortable classic polo is anything but ordinary. With superior wrinkle and shrink resistance, a silky soft hand and an incredible range of styles, sizes and colors, it's a first-rate choice for uniforming just about any group.

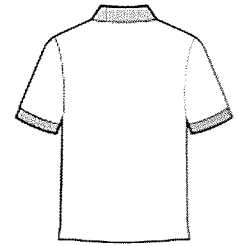
- 5-ounce, 65/35 poly/cotton pique
- Flat knit collar and cuffs
- Metal buttons with dyed-to-match plastic rims
- Double-needle armhole seams and hem
- Side vents

CARE INSTRUCTIONS

Machine Wash Cold With Like Colors. Do Not Bleach.
Tumble Dry Low. Cool Iron, If Necessary.

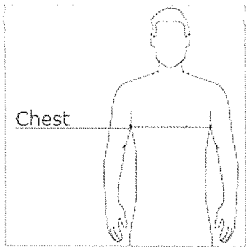


front



back

HOW TO MEASURE



CHEST WIDTH

Measure under the arm and around the fullest part of the chest with arms down, keeping tape horizontal.

SIZE CHART

	XS	S	M	L	XL	2XL	3XL	4XL	5XL	6XL
Chest	32-34	35-37	38-40	41-43	44-46	47-49	50-53	54-57	58-60	61-63

COLOR INFORMATION

PORT AUTHORITY**Port Authority® Silk Touch™ Polo K500/K500ES****PRODUCT MEASUREMENTS**

	XS	S	M	L	XL	2XL	3XL	4XL	5XL	6XL
Body Length at Back	28	29	30	31	32	33	33 1/2	34	34 1/2	35
Chest Width	19 1/2	20 1/2	21 1/2	23 1/2	25 1/2	27 1/2	28 1/2	30	31 1/2	33
Sleeve Length from Center Back	19 1/4	20	20 3/4	21 1/2	22	22 1/2	23	23 1/2	24	24 1/2

BODY LENGTH AT BACK

Measured from high point shoulder to finished hem at back.

CHEST WIDTH

Measured across the chest one inch below armhole when laid flat.

SLEEVE LENGTH FROM CENTER BACK

Measure from Center Back neck to shoulder point to sleeve hem.

PORT AUTHORITY

Port Authority® Ladies Silk Touch™ Polo. L500

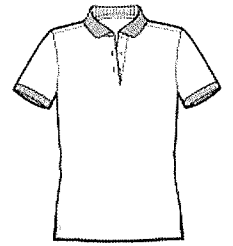


An enduring favorite, our comfortable classic polo is anything but ordinary. With superior wrinkle and shrink resistance, a silky soft hand and an incredible range of styles, sizes and colors, it's a first-rate choice for uniforming just about any group.

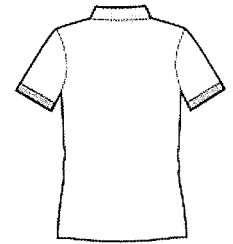
- 5-ounce, 65/35 poly/cotton pique
- Flat knit collar and cuffs
- Metal buttons with dyed-to-match plastic rims
- Double-needle armhole seams and hem
- Side vents

CARE INSTRUCTIONS

Machine Wash Cold With Like Colors. Do Not Bleach.
Tumble Dry Low. Cool Iron, If Necessary.

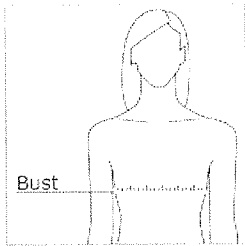


front



back

HOW TO MEASURE



BUST

Measure under the arm and around the fullest part of the bust with arms down, keeping tape horizontal.

SIZE CHART

	XS	S	M	L	XL	XXL	3XL	4XL	5XL	6XL
Size	2	4/6	8/10	12/14	16/18	20/22	24/26	28/30	32/34	36/38
Bust	32-34	35-36	37-38	39-41	42-44	45-47	48-51	52-55	56-59	60-63

COLOR INFORMATION

PORT AUTHORITY**Port Authority® Ladies Silk Touch™ Polo. L500****PRODUCT MEASUREMENTS**

	XS	S	M	L	XL	XXL	3XL	4XL	5XL	6XL
Bust	18 1/2	19 1/2	20 1/2	22	23 1/2	25	27	29	31	33
Sleeve Length	15 1/4	15 3/4	16 1/4	16 7/8	17 1/2	18 1/8	18 3/4	19 3/8	19 3/8	19 3/8
Body Length at Back	26	26 1/2	27	27 1/2	28	28 1/2	29	29 1/2	30	30 1/2

BUST

Measured across the chest one inch below armhole when laid flat.

SLEEVE LENGTH

Start at center of neck and measure down shoulder, down sleeve to hem.

BODY LENGTH AT BACK

Measured from high point shoulder to finished hem at back.



Port & Company® Beanie Cap. CP91

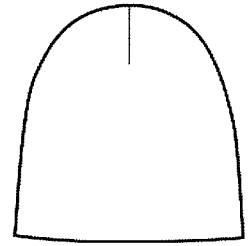


A warm must-have accessory, this beanie is available in a variety of solid colors or with a contrasting trim.

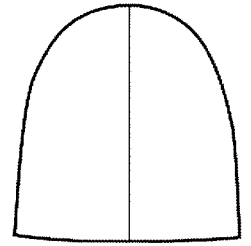
- 100% acrylic (Solid)
- 68/32 poly/acrylic (Athletic Oxford)
- 66/34 acrylic/poly (Athletic Oxford/Black)

CARE INSTRUCTIONS

Machine wash cold with like colors. Only non-colorine bleach when needed. Dry flat. Cool iron if needed.



front



back

COLOR INFORMATION



Athletic Oxford
PMS 425C



Athletic Oxford/
Black
PMS 425C



Athletic Red
PMS 7427C



Athletic Royal
PMS 2756C



Black
PMS NTR BLACK C



Black/ Natural
PMS NTR BLACK C



Navy
PMS 532C



Navy/ Natural
PMS 532C



Neon Green
PMS 802C



Neon Orange
PMS 811C



Neon Yellow
PMS NO MATCH



Port & Company[®] Beanie Cap. CP91

PRODUCT MEASUREMENTS

	OSFA
Beanie Width	8 1/2
Beanie Length	8 3/4

BEANIE WIDTH

Measure side to side of hat opening, uncuffed.

BEANIE LENGTH

Measure from top to bottom at center, uncuffed.



NEXT LEVEL APPAREL®



- 4 oz./yd², 60/40 combed ringspun cotton/polyester, 30 singles
- Classic fit
- Fabric laundered
- Set-in 1x1 baby rib collar with front coverstitching
- Side seams
- Tear away label

Colors

White	Black	Antique Gold	Banana Cream	Cancun	Cardinal	Earl Grey	Desert Pink	Flamingo	Hot Pink	Indigo	Ruby Crown	Light Orange	Lilac	Mintchili Navy
Military Green	Mint	Purple Rush	Rosemary Red	Amal	Silver	Tahiti Blue	Amber	Warm Navy						

Finished Measurements

	XS	S	M	L	XL	2XL	3XL
Body Length	25 1/2	26	26 1/2	27	27 1/2	28	28 1/2
Body Length Tolerance	1/2	1/2	1/2	1/2	1/2	1/2	1/2
Chest Tolerance	1/2	1/2	1/2	1/2	1/2	1/2	1/2
Chest Width (Laid Flat)	15 1/4	16	17	18	19 1/2	21	22 1/2



C2 Sport - Youth Mesh Shorts - 5209



- 3.8 oz./yd², 100% polyester mesh
- Solid tricot liner
- 1 1/2" covered elastic waistband
- No drawcord

Colors

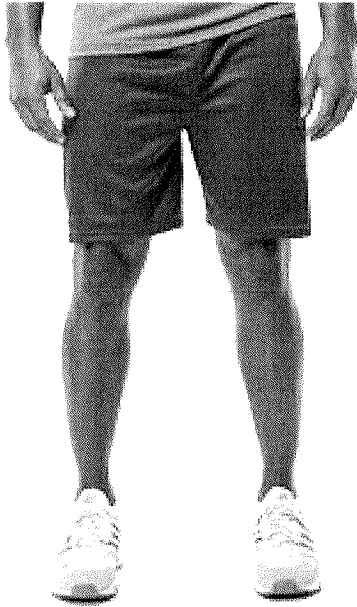
Black Forest Gold Granite Maroon Navy Orange Purple Silver

Finished Measurements

	XS	S	M	L	XL
Inseam	6	6	6	6	
Waist Extended		16	17 1/2	19	
Waist Relaxed	9 1/2	10	11 1/2	12 1/2	



C2 Sport - Mesh 7" Shorts - 5107



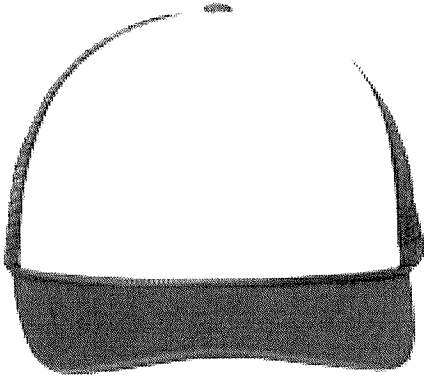
- 100% polyester mesh
- Solid tricot liner
- 1 1/2" covered waistband
- Internal drawcord
- Double-needle stitched hems

Colors

Black Bronze Gold Granite Maroon Navy Orange Red Silver

Finished Measurements

	S	M	L	XL	2XL	3XL	4XL
Inseam	7	7	7	7	7	7	7
Outseam	20	20 1/2	21	21 1/2	22	22 1/2	23
Waist Relaxed	14 1/4	15 1/4	16 1/4	17 1/4	18 1/4	19 1/4	20 1/4



- 100% polyester foam front, mesh back
- Structured, five-panel, mid-profile
- Pre-curved visor with braid detailing
- Adjustable double snapback closure

Colors

Black/Black Navy/Navy **White/Baby Blue** White/Black White/Kelly White/Navy White/Pink White/Red White/Royal White/White

Finished Measurements

Adjustable

Crown Height

3 1/2"

Measurements

6 5/8 " - 7 3/8"

Sizes (US)

Adjustable